

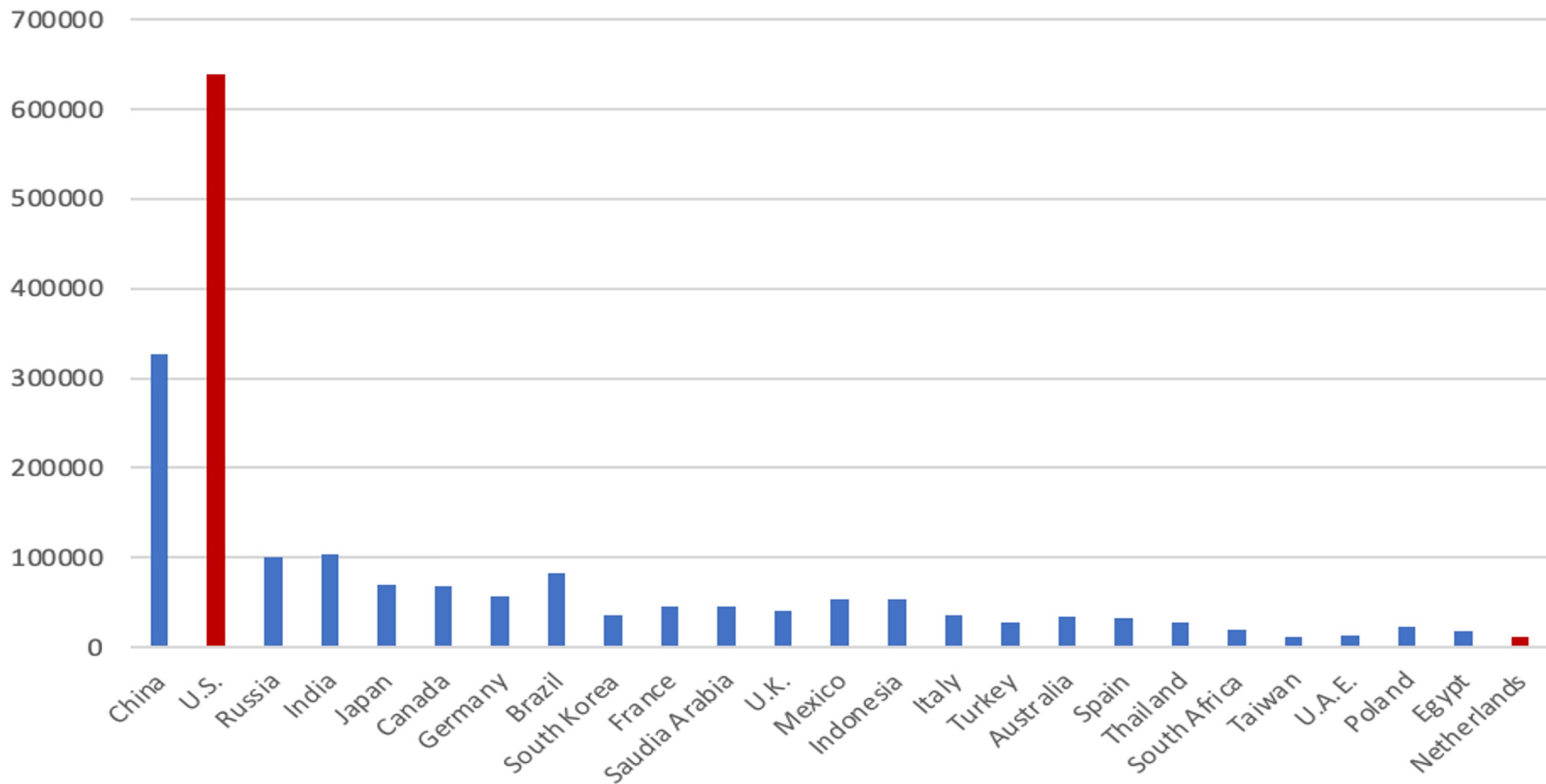
**Transportation**  
for America

---

# United States' Transportation Emissions Challenge

ACEEE International Symposium on Energy Efficiency  
Wednesday, April 6, 2022

## Transportation total final energy consumption (ktoe)







EXIT 235A  
EXIT 234C  
EXIT 234B

CVS

Shell

Wendy's

Chevron

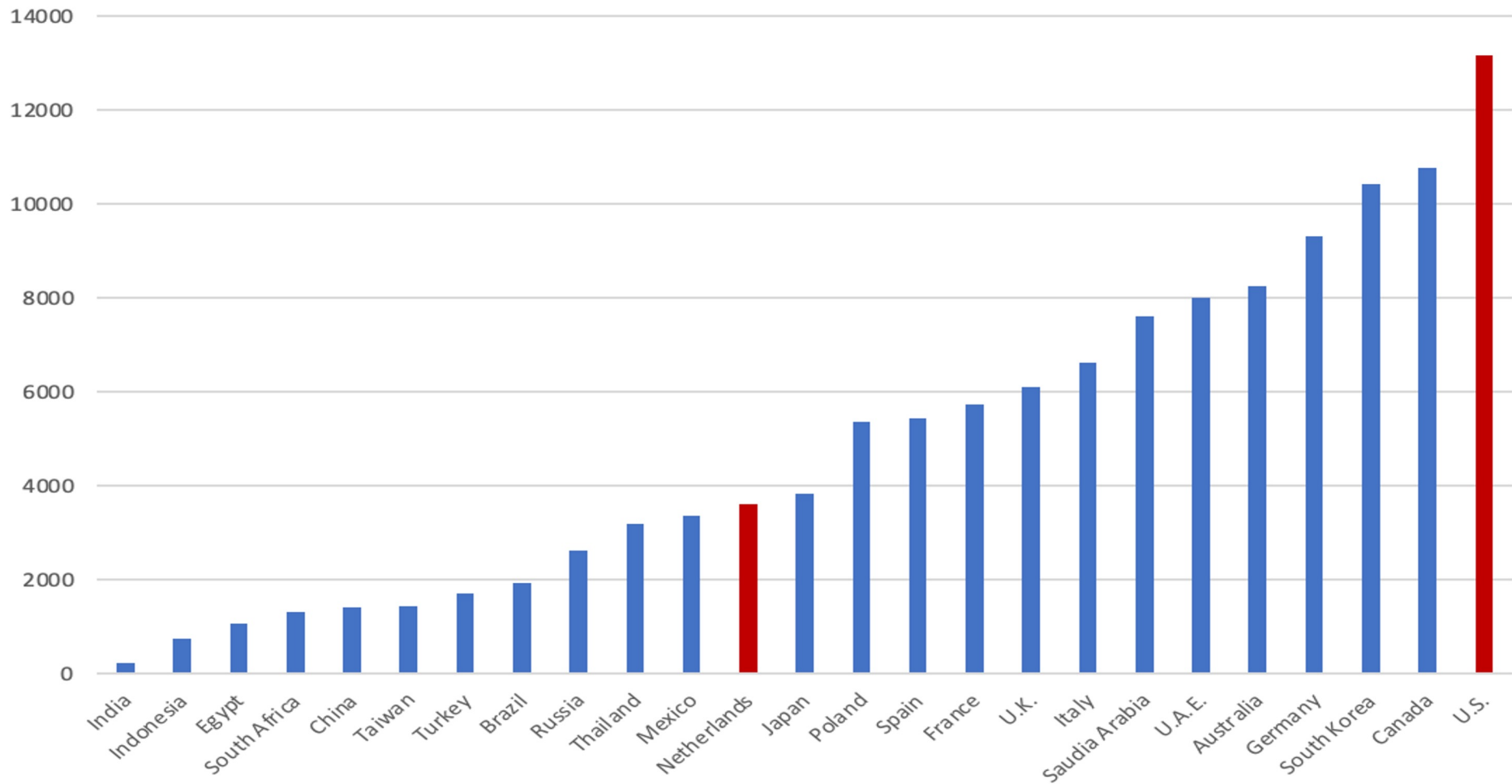
Univ of Texas  
15th & MLK Blvd  
State Capitol  
1/2 mi

6th - 12th Sts  
1/2 mi

RBFUCU

1558  
1654

## VKT per capita (2019)



PRINCIPLE #1

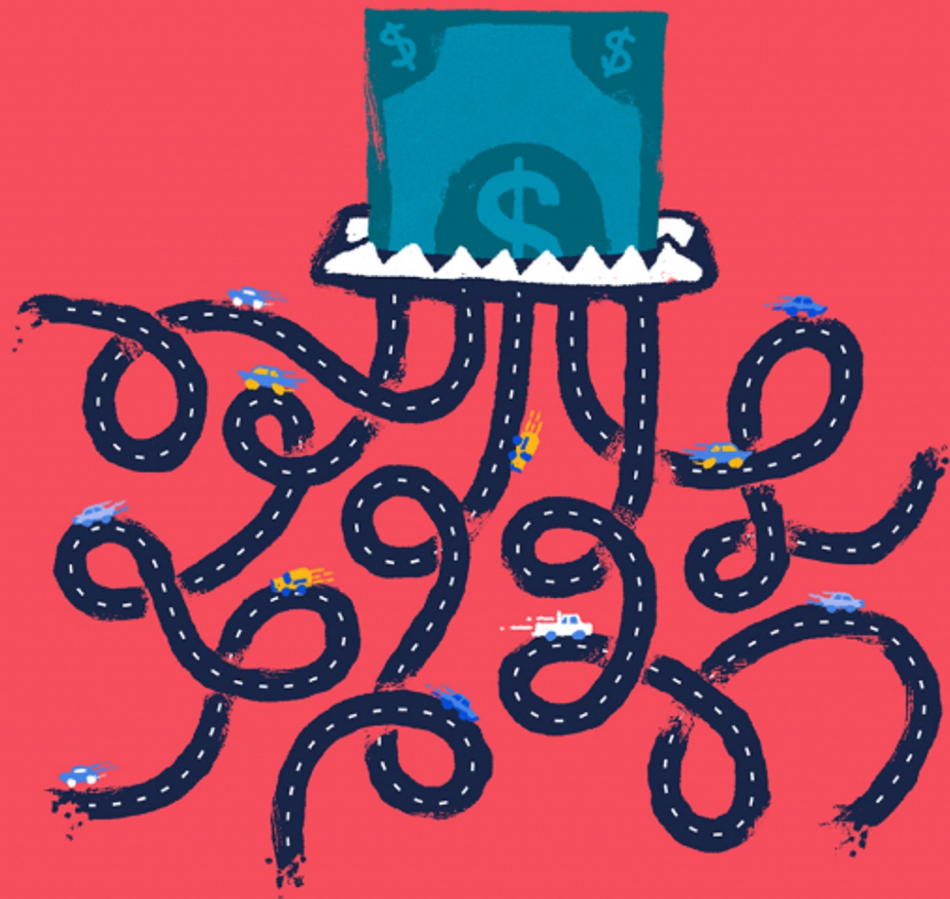
## Prioritize maintenance

Cut the road, bridge, and transit maintenance backlog in half by dedicating formula highway funds to maintenance.

**Did you know:** States are permitted to neglect their basic maintenance needs in order to expand their roadway systems—and then rewarded with more funding.



[www.t4america.org/platform](http://www.t4america.org/platform)



PRINCIPLE #2

## Design for safety over speed

A serious effort to reduce deaths on our roadways requires slower speeds on local and arterial roads. The federal program should require designs and approaches that put safety first.



[www.t4america.org/platform](http://www.t4america.org/platform)

PRINCIPLE #3

## Connect people to jobs and services

Don't focus on speed. Instead, determine how well the transportation system connects people to jobs and services, and prioritize the projects that will improve those connections.



[www.t4america.org/platform](http://www.t4america.org/platform)

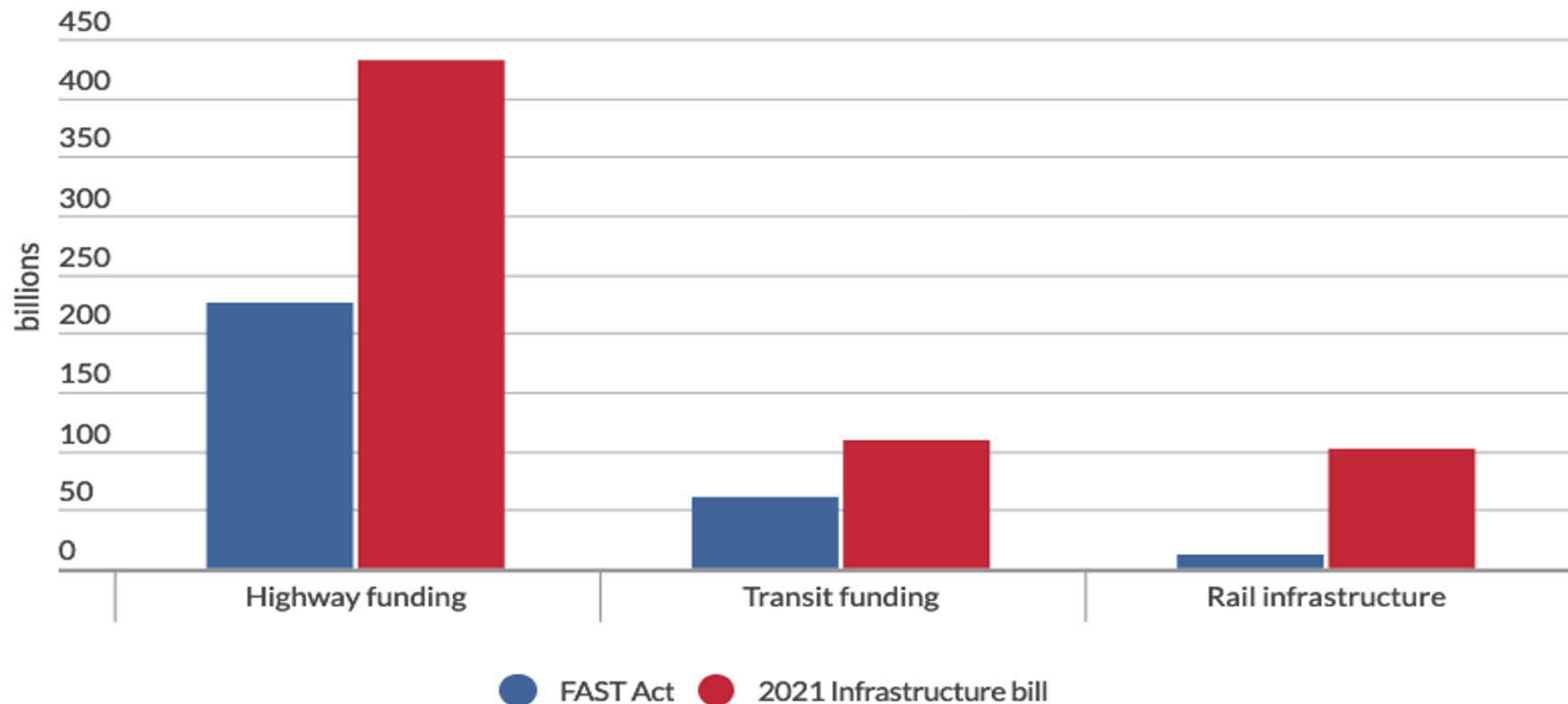




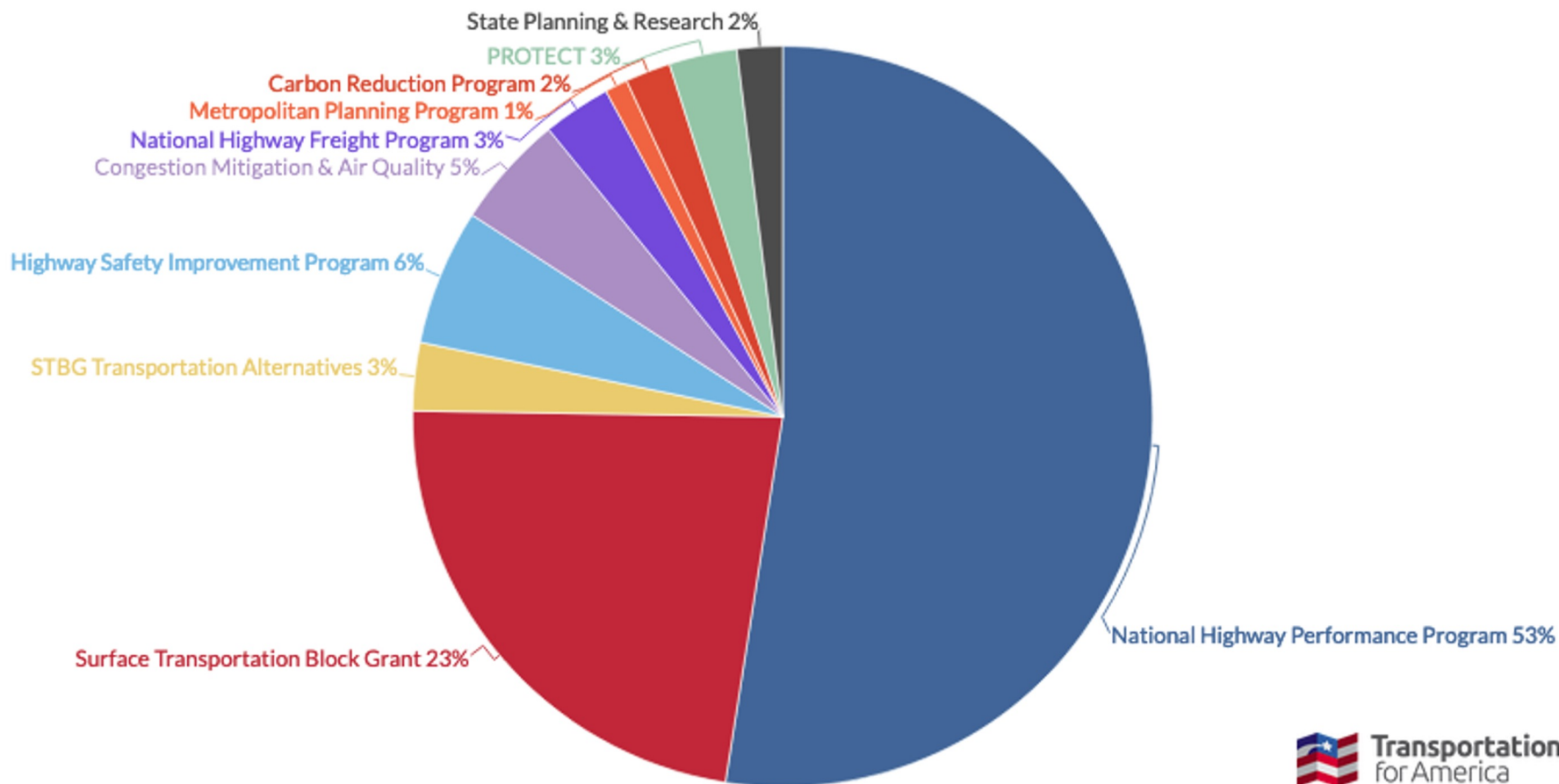
# CHARGE



# FAST Act vs the 2021 infrastructure bill



# Highway trust fund formula programs (by percentage)



A man in a dark suit, white shirt, and patterned tie is holding a snowball in his right hand. He is looking down at the snowball. The background is a blue patterned wall.

S. SENATE


SEN. JAMES INHOFE

# Future of Transportation Caucus



Rep. Mark Takano on...  
**EXPANDING ACCESS TO  
TRANSPORTATION GRANTS**

# Significant progress in House's 2020 INVEST Act

 Transportation for America	House bill	Senate bill
<b>Maintenance</b> Does it cut the maintenance backlog in half?	✓	X
<b>Speed</b> Does it address speed as a major cause of roadway crashes?	✓	X
<b>Access</b> Is it organized around connecting people to jobs and services?	✓	X

# Thank you

T4America.org

 @t4america